

# FIRE DEBRIS REMOVAL TRUCKS ON SUNSET BLVD

Environmental and Traffic Impacts

April 7, 2025

The logo for the Brentwood Homeowners Association, featuring a stylized house icon above the text "BRENTWOOD HOMEOWNERS ASSOCIATION".

BRENTWOOD  
HOMEOWNERS  
ASSOCIATION

# Traffic Impact Felt Just Weeks After Fire

---

January 27 community raised issue of significant increase in traffic on Sunset Blvd at BCC meeting with Councilwoman Traci Park and LADOT

---

LADOT stated those accessing the Palisades burn area at that time (Phase 1) were being routed to PCH to leave **"Sunset free for the Brentwood residents."**

---

Councilwoman Park shared concerns about Phase 2 vehicle trips on Sunset Blvd/Brentwood community; mentioned staging and shuttling to avoid impacting other locations



# LADOT Haul Route Issued

- February 8, LADOT recommends haul route for debris removal that uses Sunset west to PCH to the 10 east, avoiding residential area.
- Route shared with all members involved in the recovery effort (City, County, Federal).
- Army Corps of Engineers acknowledges route, community believes they will follow it.



Start	Route	End	Mileage
PCH 1	Azusa	SA Recycling LA	17
PCH 1	Azusa	SA Recycling El-Monte	32
PCH1	Azusa	SA Recycling Irwindale	37
PCH1	El Sobrante	SA Recycling Anaheim	43

Disposal Site	Type of Debris	Example Type
Azusa Landfill	Hazard / ACM / Concrete	Ceiling tiles, pipe wrap, some concrete
Calabasas Landfill	General / Green	Fire ash, debris, grass, trees, wood
El Sobrante LF	General	Fire ash, debris
Simi Valley LF	General	Fire ash, debris
Sunshine Canyon LF	General	Fire ash, debris
SA Recycling LA	Recyclable	Glass, metal, plastic
SA Recycling Irwindale	Recyclable	Glass, metal, plastic
SA Recycling El Monte	Recyclable	Glass, metal, plastic
SA Recycling Anaheim	Recyclable	Glass, metal, plastic



## Legend

- McClure Tunnel
- Disposal Site
- Landfill
- Recycling
- Wildfire Perimeter
- Palisades to Simi Valley Landfill 32 Miles
- Kanan Dume to Calabasas Landfill (ALT) 23 Miles
- Palisades to Azusa Landfill 41 Miles
- Palisades to El Sobrante Landfill 73 Miles
- Palisades to Sunshine Landfill 28 Miles
- Palisades to Calabasas Landfill 18 Miles

Sources:

Imagery Background:  
 Esri, NASA, NGA, USGS, City of Pasadena, CA, County of Los Angeles, California State Parks, Esri, TomTom, Garmin, FAD, NOAA, USGS, EPA, USFWS, City of Pasadena, CA, County of Los Angeles, California State Parks, Esri, TomTom, Garmin, SafeGraph, FAD, METANASA, USGS, Bureau of Land Management, EPA, NPS, USFWS, Esri, USGS

Coordinate System:  
 NAD 1983 StatePlane California V FIPS 0405 Feet

0 3.5 7 14 Miles

## Emergency Management

PALISADES  
 DEBRIS REMOVAL  
 DISPOSAL SITES &  
 HAUL ROUTES

# What We Expected....





**What We Got....**



# Dangerous Level of Traffic ...

- Gridlock prevents access by emergency vehicles.
- Residents trapped in homes with increase in traffic on local streets or prevented from even getting home.
- Excessive truck weight from thousands of trips is damaging Sunset Blvd.
- No relief from traffic as trucks on roads increase travel time, even on weekends.





# ...and a Health Hazard

- Toxic fire debris traveling through Brentwood poses a risk to residents and school children as well as the environment.
- Inconsistent placement of tarps on trucks (or sometimes no tarps at all) allows the release of this toxic material from the truck.
- Effect of of these pollutants on our health is not yet known and could have long term impacts. Why risk it when a safe alternative exists.







Why has the Army Corps of Engineers not required all contractors to use the recommended LADOT haul route?

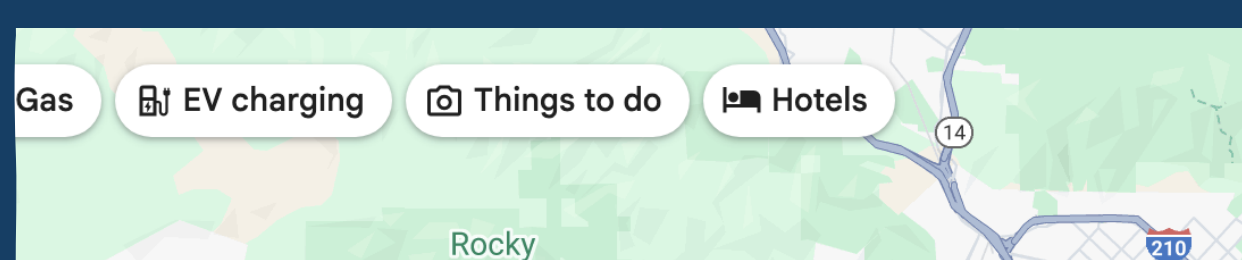
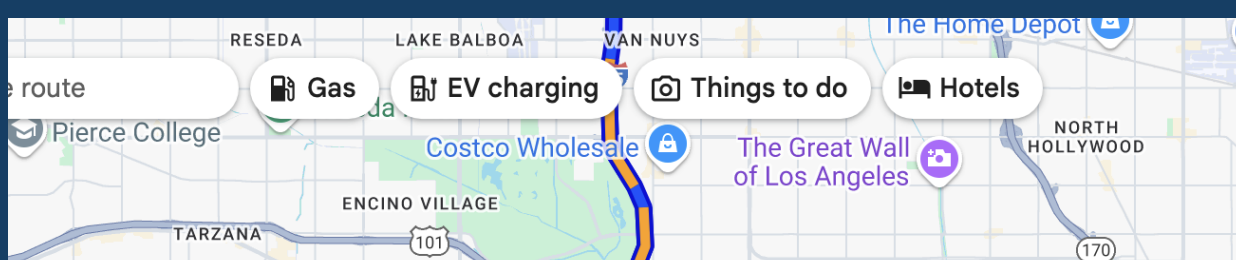
Phase 2 is just now ramping up. How much more can we take if we are beyond capacity now?



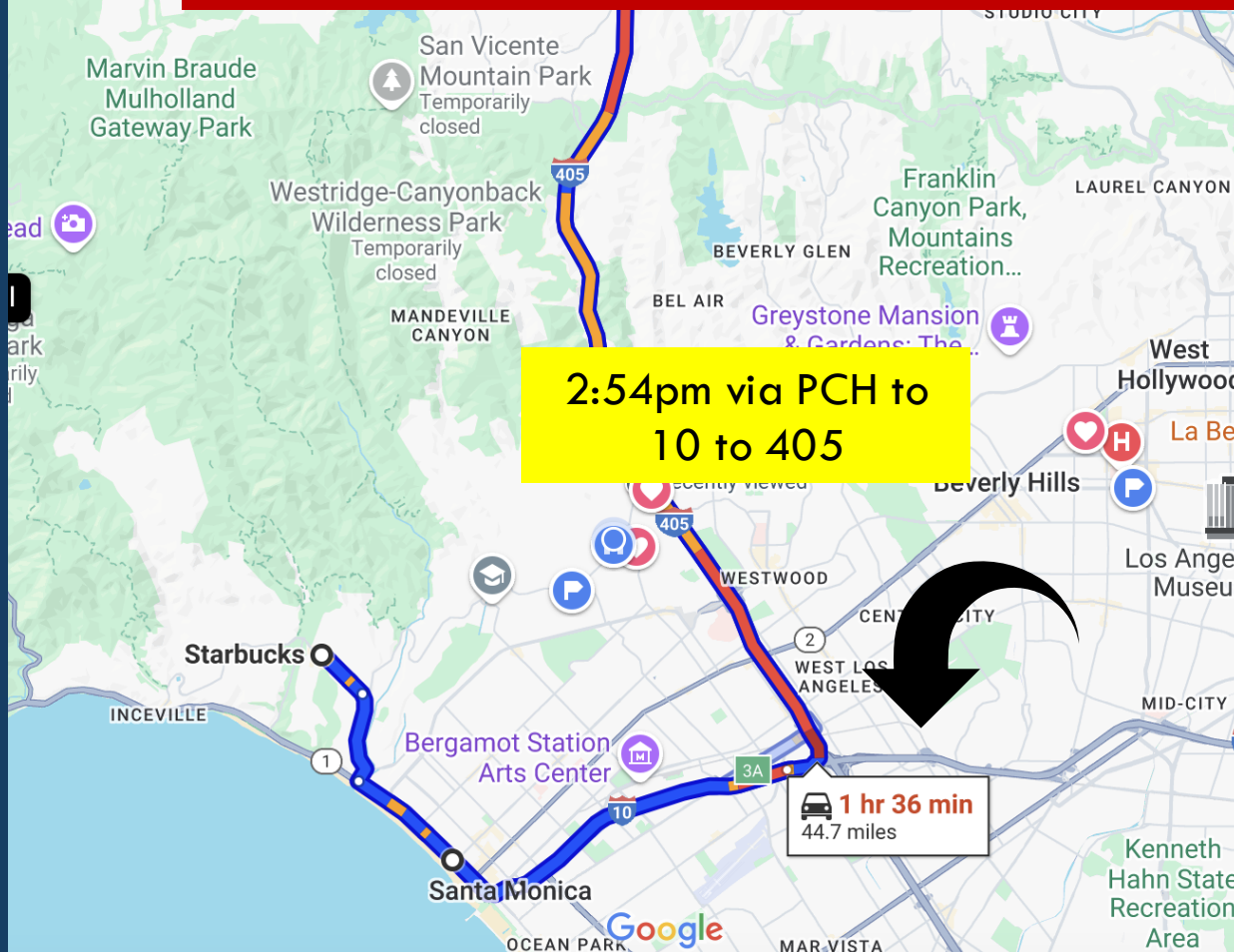


What the USACE Should Know



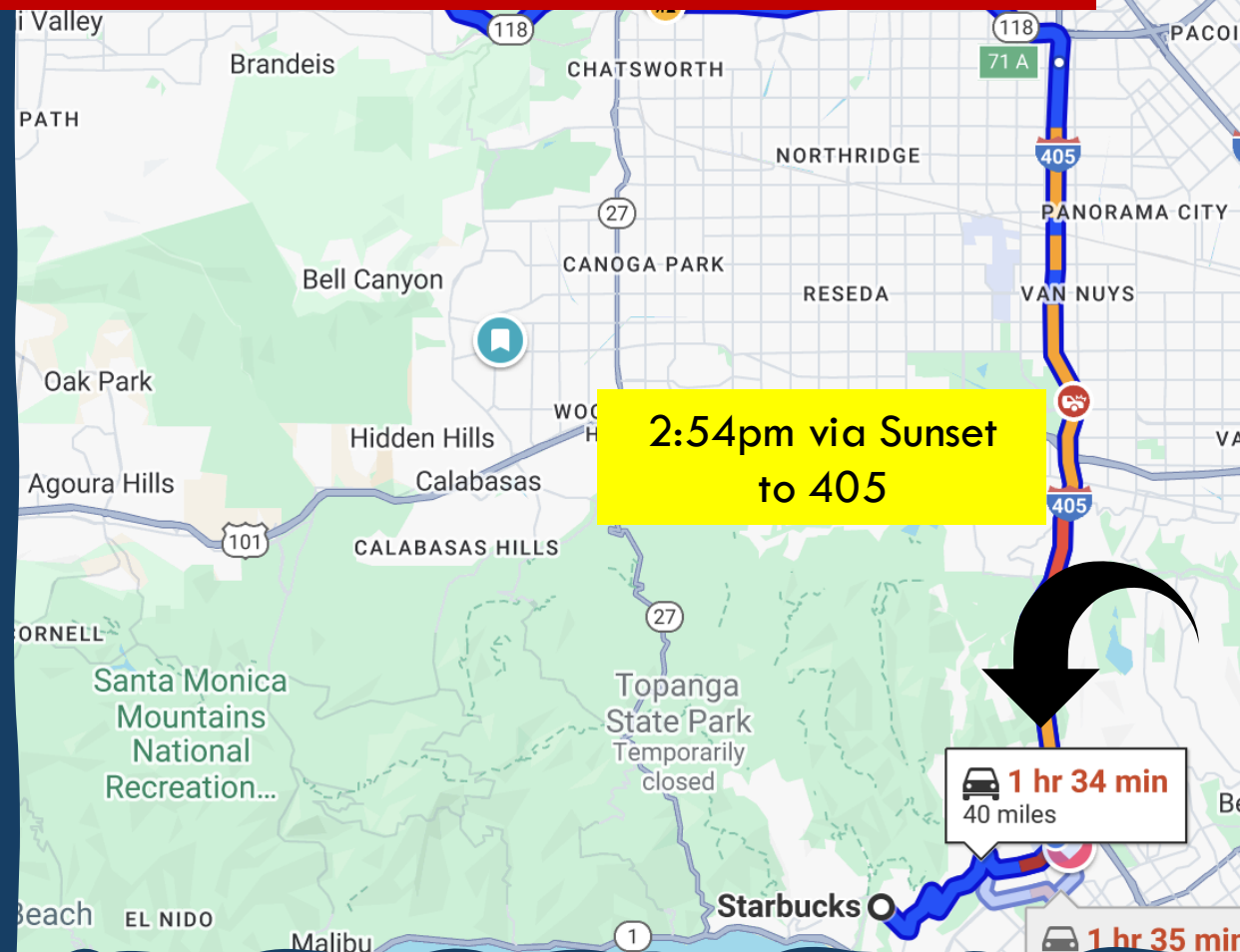


**It is NOT faster to take Sunset Blvd to the 405**



**2:54pm via PCH to  
10 to 405**

**1 hr 36 min**  
44.7 miles



**2:54pm via Sunset  
to 405**

**1 hr 34 min**  
40 miles

**1 hr 35 min**



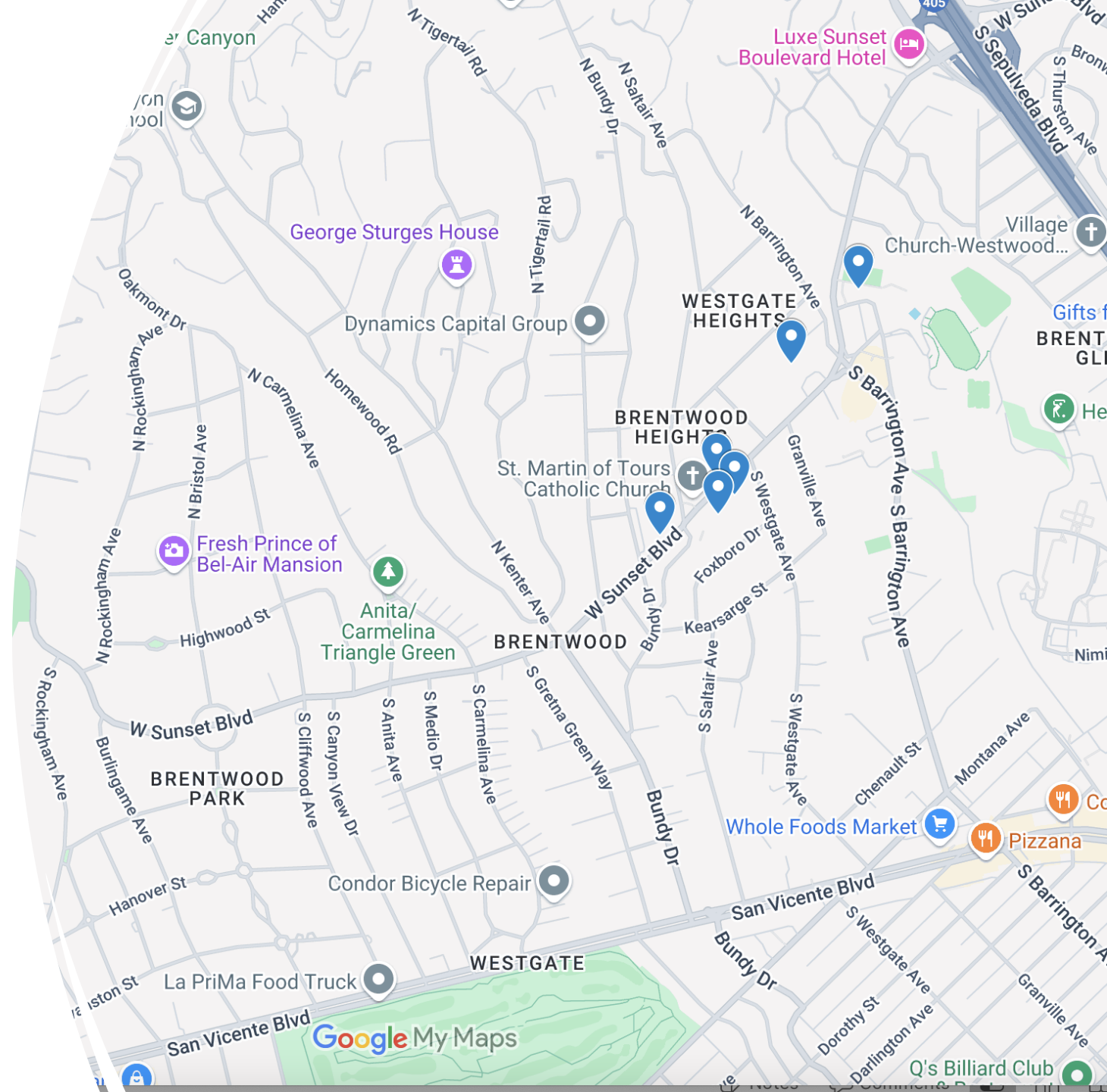


## Trucks on Residential Street Kearsarge

Because of the gridlock on Sunset, even the trucks are trying to avoid it by using local streets, in violation of LADOT guidelines.



\_\_\_\_\_





# Sunset Boulevard Cannot Handle Thousands of Trucks Weighing Four Times the Maximum Allowed

Eligible Parcels

**13,579**

Total Opt-In Submissions

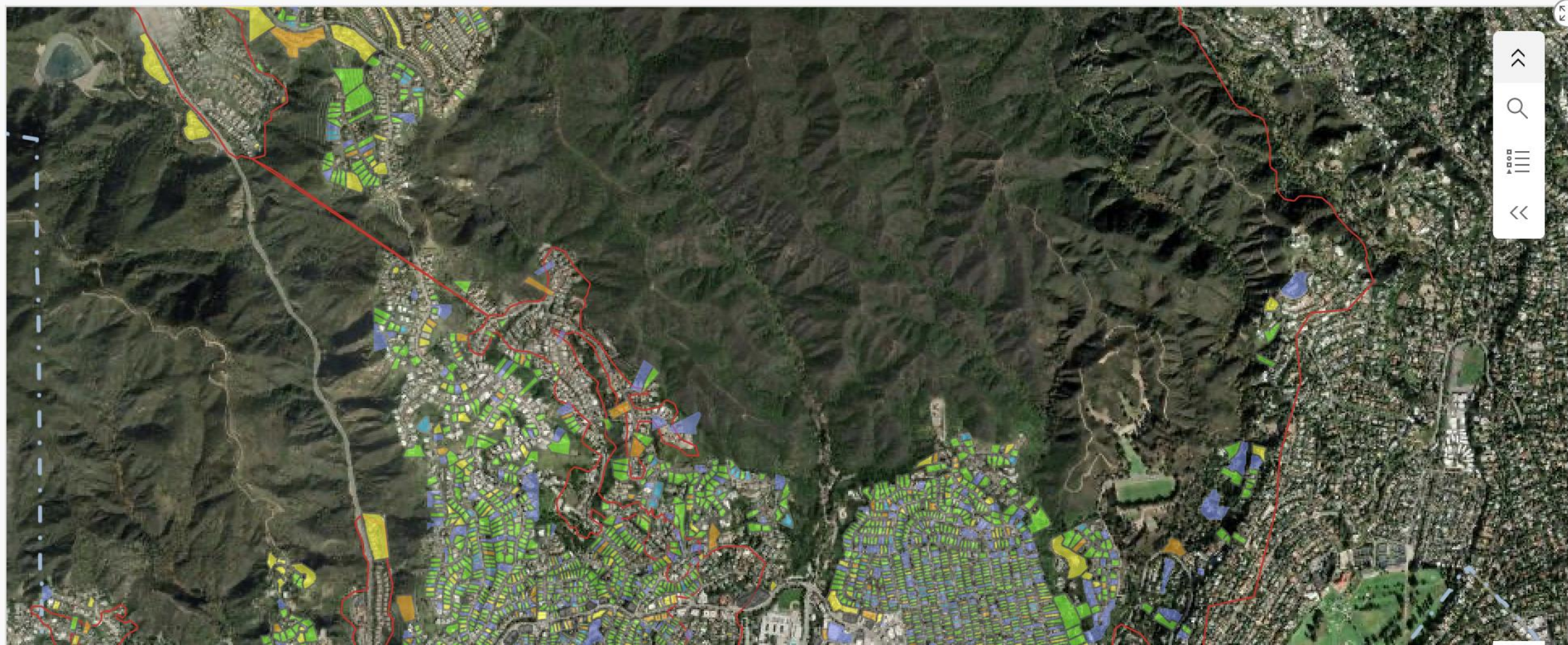
**3,532**

Transmitted to USACE

**2,631**

With USACE

**2,365**



Total ROE Under Review

**451**

Total Add. Info Needed

**403**

Removal Complete

**266**



Key to the recovery process is setting systems in place that allow rebuilding to continue **without impacting surrounding communities** and the Palisades neighborhood itself.

*Mayor Bass*

## MITIGATION MEASURES

REQUIRE the haul route recommended by LADOT for private AND Army Corps contractors

Eastbound checkpoint/BLOCKADE at Amalfi and Sunset to prevent trucks from going east on Sunset to access the 405

Inspection and ENFORCEMENT of tarp requirements of trucks before leaving recovery area to ensure proper handling of fire debris